

## Road Safety Products

# Laser Perimeter



### Laser Perimeter & TMA Protect

#### Features & Benefits

- Programmable
- Trigger Warnings
- Integrated
- Rechargeable
- Proximity

Workzone run-throughs have become all too common, Boylan's Laser Perimeter provides an invisible safety barrier, in a straight line, warning of any workzone perimeter breach. The device has multiple trigger options; siren, strobe, personal pager etc. and will function in all weather.

TMA's provide excellent protection for motorists but it would be preferable if they were not impacted at all! When used as a TMA Protector the device can warn drivers who remain in the TMA lane within a user defined distance.

When used at the front of the TMA vehicle, it can alert motorists and workforce when a 'cut-in' incident occurs.

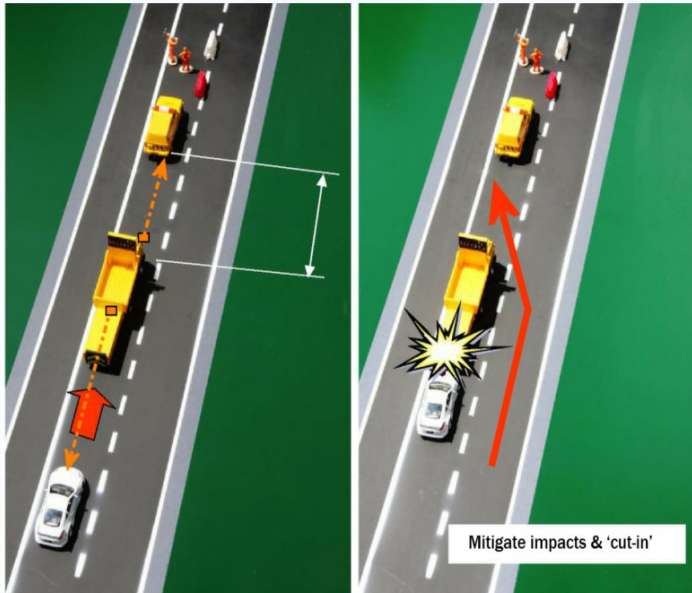
#### Head Office

198 Power Street  
Glendenning NSW 2761  
E [info@boylan.net.au](mailto:info@boylan.net.au) | [boylan.net.au](http://boylan.net.au)

Call us 1300 500 055



## TMA Protect



TMA's form an integral part of our layered approach to workzone and motorist safety however regardless of advance warning signage, due to inattention some motorists do claim not to have seen them. The Purpose of the Boylan TMA Laser Protector is to alert drivers and workforce personnel that a vehicle is within a user defined distance of the TMA. Or that a vehicle has 'cut-in' in-front of the TMA.

Damage to impacted TMA's may require the replacement of the entire unit at considerable cost, not forgetting the dangers to motorists and workforce.

With an Android Tablet device and Bluetooth connectivity the TMA Laser Protector can be controlled from inside the cab. Operating at 905nm the laser is invisible to the naked eye but as with all lasers it is paramount that operators do not stare directly at the functioning laser optics.

Minimum and maximum protection distances may be set via Boylan Android Application.

## Laser Perimeter

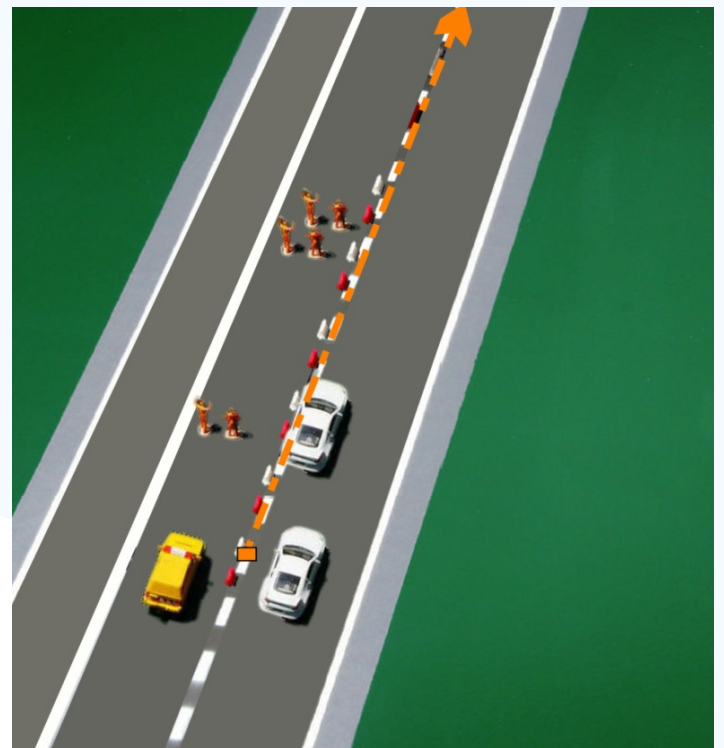
The Boylan Laser Perimeter is a rechargeable, standalone unit with multiple mounting opportunities.

Unlike reflective laser technology, the Laser Perimeter does not require pairing with a sister panel at the opposite end allowing for rapid deployment, mobility and aligning. The operator simply establishes the functioning distances of the trigger and aligns with the workzone perimeter.

Operating at 905nm the laser is invisible to the naked eye but as with all lasers it is paramount that operators do not stare directly at the functioning laser optics.

The operational distance of the device is laser technology dependant with the premium model detecting perimeter breaches up to 1500m in a straight line.

The Boylan Laser Perimeter is an innovative solution as part of a layered approach to workzone safety and can trigger multiple warning scenarios.



### Head Office

198 Power Street  
Glendenning NSW 2761

E [info@boylan.net.au](mailto:info@boylan.net.au) | [boylan.net.au](http://boylan.net.au)

Call us 1300 500 055

