

SPEEDCHECK-12

Small, Portable Radar Speed Sign Data Sheet



Affordable radar speed sign system packed with premium features at no additional cost:

- ✓ Calendar/schedule operation
- ✓ Data collection with visualization and reporting software
- ✓ Mobile app for iOS® and Android™
- ✓ Rapid-flashing strobe
- ✓ Stealth mode
- ✓ On-board diagnostic status and health indicators
- ✓ 3-year warranty

Fully Compliant, Ultra-clear Display

Compliant to standards for legibility, including LED color, character and letter height. The bright LED display uses 12-inch digits against a background designed for high-contrast visibility that prevents “88” ghosting—ensuring readability in all weather and lighting conditions. The unique safety mask limits the viewing angle to prevent drivers from watching the display as they pass.

Long-lasting, Reliable Operation

The LED display is housed within a durable, weatherproof aluminum unit and is shielded with a tough polycarbonate window for added vandalism protection. Every solar-powered model is solar-sized by location to ensure year-after-year operation.

Easy Installation and Connectivity

The SpeedCheck® sign arrives ready to work out of the box. Its modular, lightweight design and built-in handle allows a single person to install on a pole or flat surface. Bluetooth® allows for quick connectivity and setup via the SpeedCheck Manager mobile app or PC software. A StreetHub™ model comes factory prewired and pretested for remote communication—enabling cloud-based access within minutes.



SPEEDCHECK-12
12-inch digits



Buy America compliant



3-year limited warranty



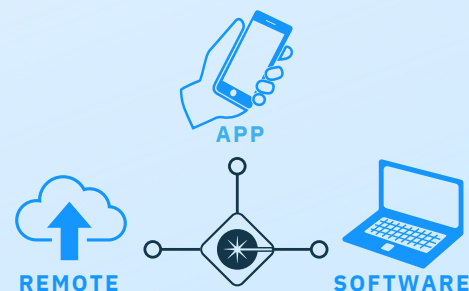
Solar - sized for every location



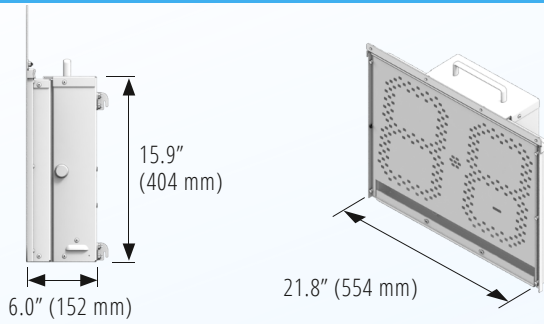
Up to 21 days battery run time



Up to 300m radar detection



LED DISPLAY



LED Display and Strobe

- Character height and LED color for roadways
- Seven-segment digit design using 224 amber LEDs
LEDs automatically dim during nighttime operation, minimizing light bounce into neighboring windows
- Includes rapid-flashing strobe with white LEDs at the center of the display (with ON/OFF setting)
- Includes stealth mode for data collection

Radar

- Detection range up to 100m extended range option available
- Single-direction, K Band Doppler radar (+/- 1 km) with 12° radar beam width



Construction

- Weatherproof, gasketed enclosure with vents for ambient air transfer
- Corrosion-resistant aluminum chassis with stainless steel hardware
- 3/16" polycarbonate window protects digital display from weather and vandalism
- Keyed access prevents sign removal and battery theft

Weight

- 6.8 kg without batteries

"YOUR SPEED" STATIC SIGN

- Sign** Legibility standards for color, character and height 3M High Intensity Prismatic or Diamond Grade retroreflective
- Sheeting** Sheeting and components
- Colour** Available in yellow and white  



24" x 22"
(610 mm x 559 mm)



30" x 24"
(762 mm x 610 mm)



30" x 36"
(762 mm x 914 mm)

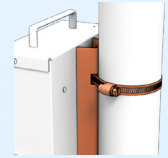
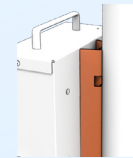
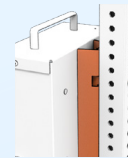
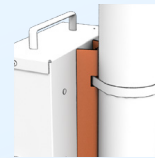
LED DISPLAY MOUNTS

Standard
Banding/
Flat Surface

Through Bolt
(2" - 2.5" Square
Poles)

Through Bolt
(2.38" - 2.88" & 4.5"
Diameter Round
Poles)

Band Clamps
(2.38" - 4.75" &
5.5 - 8.25" Diameter
Round Poles)



COMMUNICATION

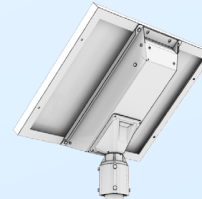
Local	Bluetooth, mobile app and PC software (SpeedCheck Manager)
Remote	Optional StreetHub model includes fully integrated monitoring unit from the factory and Glance cloud-based software for two-way communication, reporting and monitoring

POWER OPTIONS

Battery	Up to 21 days battery run time
	Includes external battery charger
	Maintenance-free, non-proprietary AGM batteries offer the widest temperature range and longest life Batteries can be easily replaced at low cost
Solar	12 VDC operation, solar sized to specific geographic location
AC	100-240 VAC in standard configurations

SOLAR KITS AND MOUNTS

Top of Pole
Mount



Side of Pole Mount



PANEL	LENGTH	WIDTH
30W	21.5" (545 mm)	15.7" (400 mm)
50W	26.3" (668 mm)	21.2" (538 mm)



Specifications subject to local environmental conditions, and may be subject to change.

All Carmanah products are manufactured in facilities that are certified to ISO quality standards. "Carmanah" and Carmanah logo are trademarks of Carmanah Technologies Corp. © 2022, Carmanah Technologies Corp. Document: Carmanah_DATA_SPEEDCHECK-12_RevA